

WHISPER[®] XL DC

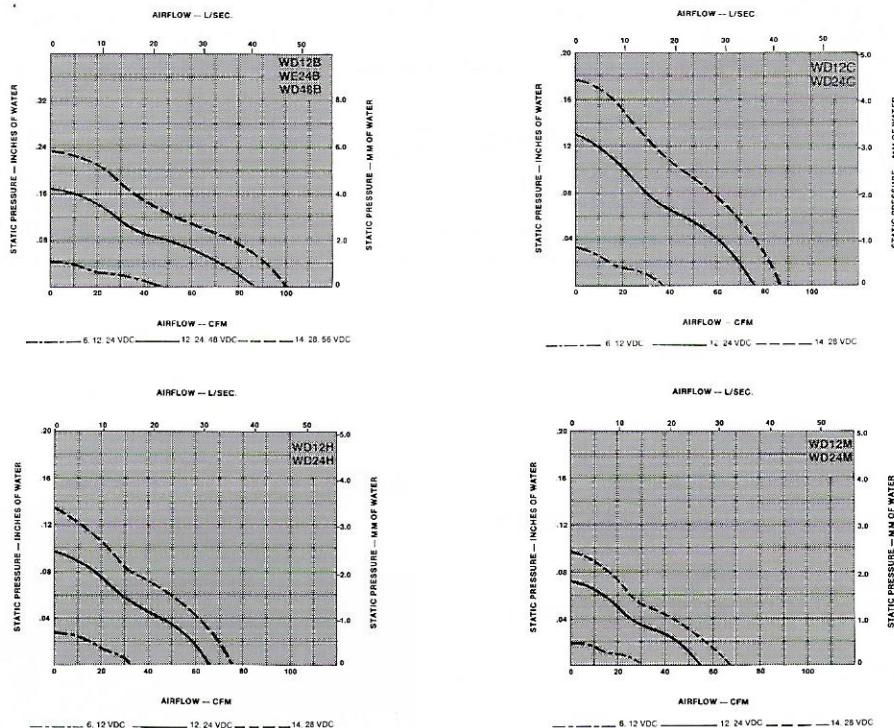
TUBEAXIAL FAN

FEATURES

- Size - 4.69" square x 1.54" deep (119.1 mm x 39.1 mm)
- 55 to 85 CFM (26.0 to 40.1 L/Sec.)
- 12, 24 and 48 VDC (Nominal)
- Feathered Edge™ for lower noise
- Operating Temperature range: -10°C to +70°C
- Weight - 21.5 oz (.61 Kg)
- UL Yellow Card Recognized— File No. E31293
- CSA certified— File No. LR52898
- TUV Certified - EN 60950



PERFORMANCE



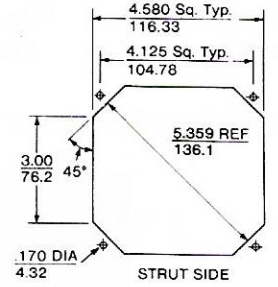
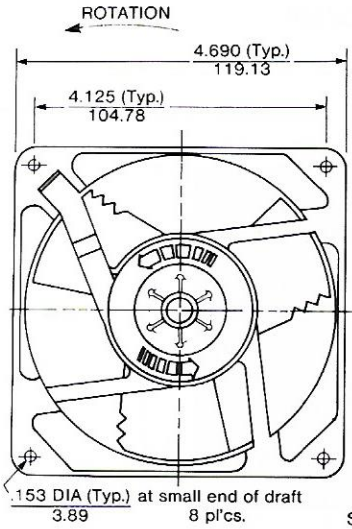
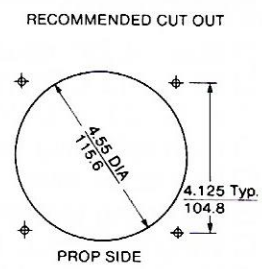
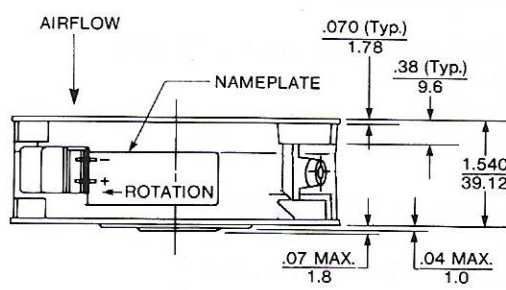
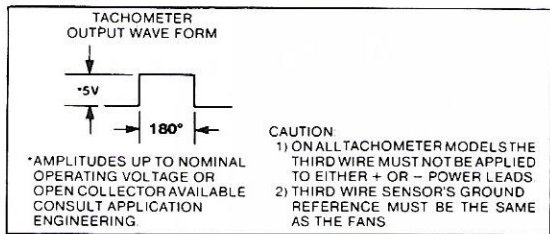
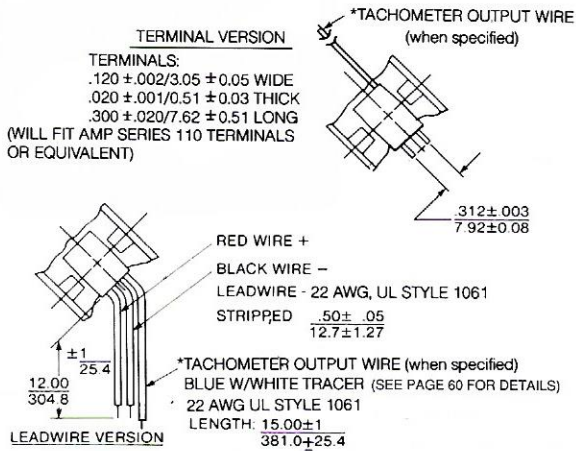
SPECIFICATIONS

LEADWIRES		TERMINAL		Bearing	Nominal Range		Watts	Running	Locked	Inrush	RPM	CFM	L/Sec.
Model No.	Part No.	Model No.	Part No.		VDC	VDC		Current	Rotor	Current			
WD12B3	030709	WD12B4	030727	Ball	12	6-14	3.4	280	750	750	2525	85	40.1
†WD12B7	030710	†WD12B8	030728	Ball	12	6-14	3.4	280	750	750	2525	85	40.1
WD24B3	030711	WD24B4	030729	Ball	24	12-28	3.4	150	440	310	2525	85	40.1
†WD24B7	030712	†WD24B8	030730	Ball	24	12-28	3.4	150	440	310	2525	85	40.1
WD48B3	030713	WD48B4	030731	Ball	48	24-56	3.4	70	160	160	2525	85	40.1
†WD48B7	030714	†WD48B8	030732	Ball	48	24-56	3.4	70	160	160	2525	85	40.1
*WD12C3	030715	WD12C4	030733	Ball	12	6-14	2.4	200	660	660	2230	75	35.4
†WD12C7	030716	†WD12C8	030734	Ball	12	6-14	2.4	200	660	660	2230	75	35.4
*WD24C3	030717	WD24C4	030735	Ball	24	12-28	2.4	100	310	310	2230	75	35.4
†WD24C7	030718	†WD24C8	030736	Ball	24	12-28	2.4	100	310	310	2230	75	35.4
WD12H3	030719	WD12H4	030737	Ball	12	6-14	1.8	150	450	450	1930	65	30.1
†WD12H7	030720	†WD12H8	030738	Ball	12	6-14	1.8	150	450	450	1930	65	30.1
WD24H3	030721	WD24H4	030739	Ball	24	12-28	1.7	67	183	183	1930	65	30.1
†WD24H7	030722	†WD24H8	030740	Ball	24	12-28	1.7	67	183	183	1930	65	30.1
*WD12M3	030723	WD12M4	030741	Ball	12	6-14	1.2	100	330	330	1635	55	26.0
†WD12M7	030724	†WD12M8	030742	Ball	12	6-14	1.2	100	330	330	1635	55	26.0
*WD24M3	030725	WD24M4	030743	Ball	24	12-28	1.2	52	135	135	1635	55	26.0
†WD24M7	030726	†WD24M8	030744	Ball	24	12-28	1.2	52	135	135	1635	55	26.0

*Distributor Item

All figures are nominal delivery values at sea level

†Tachometer Output Models



DIMENSIONS: in ± mm
 TOLERANCES: .xx = .03 / 0.8
 .xxx = .010 / .25
 ANGULAR ± 2° (UNLESS NOTED)

Specifications subject to change without notice.

MOTOR

Brushless electronic commutation provided by dependable solid state circuitry.
 Stainless steel ball bearings.
 100% dielectric tested at 600 VAC/1 sec./500 microamps maximum leakage.
 Electronic locked rotor protection. (P.T.C.) WD_B_versions
 Impedance protected WD_C_, WD_H_ and WD_M_versions
 Automatic restart capability.
 Polarity protected.
 Power transistors heat sunk to metal housing.
 Stainless steel shaft.

CONSTRUCTION

Venturi - one piece die-cast zinc alloy, painted black.
 Propeller - flame retardant polypropylene,
 Meets UL 94V-O flammability rating.

EMI

Per MIL STD 461, meets EMI standards per FCC Part 15, Subpart J of Docket 20780, Class A and B radiated and conducted emission, meets EMI standards per VDE Specification 0871/6.78 for category A and B requirements.

OPTIONS

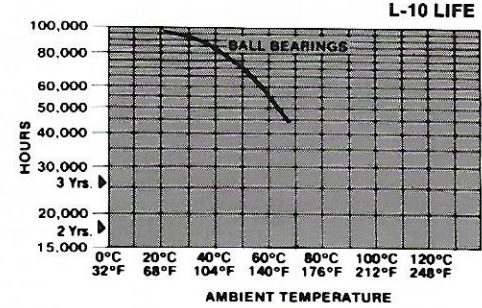
Capable of furnishing:
 Reverse flow
 Sleeve or ball bearing models
 Choice of leadwires or terminal block
 Tachometer Output - square wave output equal to one pulse per revolution. Two pulses available as "special" only.
 Harness assemblies
 Fan Performance Sensor

ACOUSTIC RATINGS

Models	VOLTAGE		AIR FLOW		STATIC PRESSURE		PER INCE ANSI S12.11-1987			FREELY SUSPENDED @ 1 METER
	DC		CFM	L/Sec	"w.g.	mm H ₂ O	PSIL dB	SPL dBA @ 3'	NEPL Be/s 'A'	dBA
WD12B	NOMINAL		85	40.1	0	0	39.8	45.2	5.52	41.4
WD24B			59	27.8	0.06	1.52	38.8	44.2	5.42	
WD48B			75	35.4	0	0	37.9	43.4	5.34	39.4
WD12C	NOMINAL		44	20.8	0.06	1.52	34.3	39.8	4.98	
WD24C			65	30.7	0	0	33.6	39.3	4.93	34.9
WD12H	NOMINAL		32	15.1	0.05	1.27	30.2	36.1	4.61	
WD24H			55	26.0	0	0	29.4	35.6	4.56	30.3
WD12M	NOMINAL		36	17.0	0.036	0.91	25.6	32.5	4.25	
WD24M										

LIFE EXPECTANCY

The curve represents the continuous duty life of Whisper XL DC fans at a given temperature, after which 90% of the units will still be operating.



Example: When run at 40°C ambient, 90% of Whisper XL DC ball bearing units will still be running after 83,000 hours continuous duty.