

SPRITE[®] DC

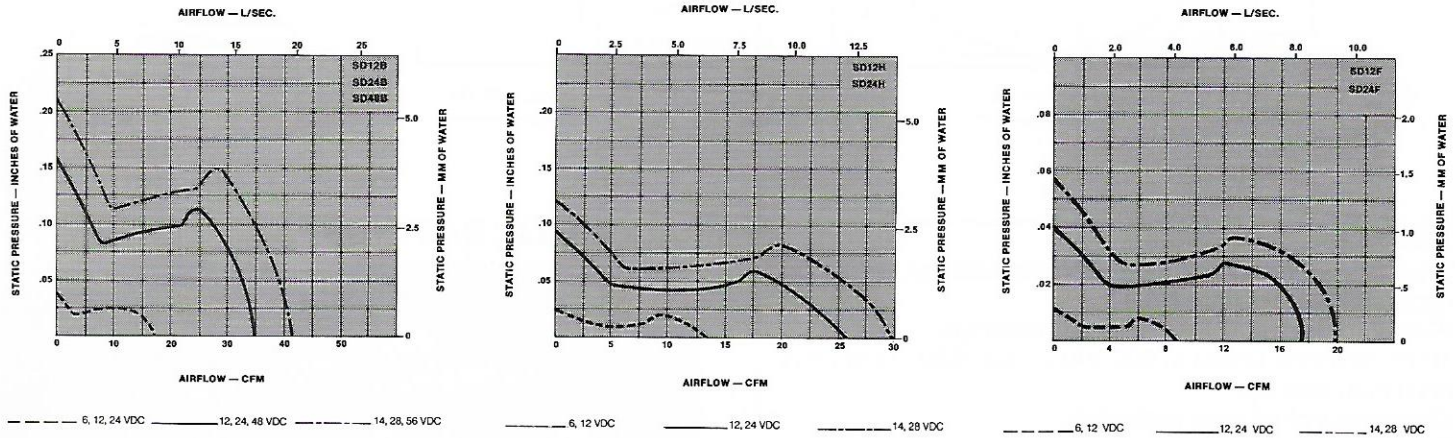
BRUSHLESS DC FAN

FEATURES

- Size - 3.14" square x 1.645" deep (79.8mm x 41.8mm)
- 17 to 35 CFM (8.0 to 16.5 L/Sec.)
- 12, 24 and 48 VDC (Nominal)
- Low noise level
- Operating temperature range: -10° C to +70° C
- Weight - 18 oz. (.51 Kg)
- UL Yellow Card Recognized—File No. E31293
- CSA Certified—File No. LR52898
- TUV Certified - EN 60950



PERFORMANCE

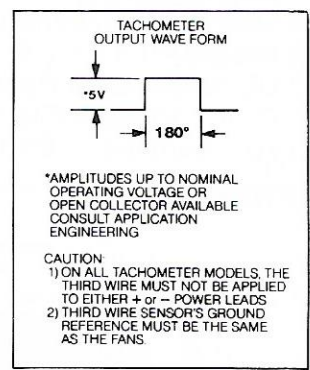
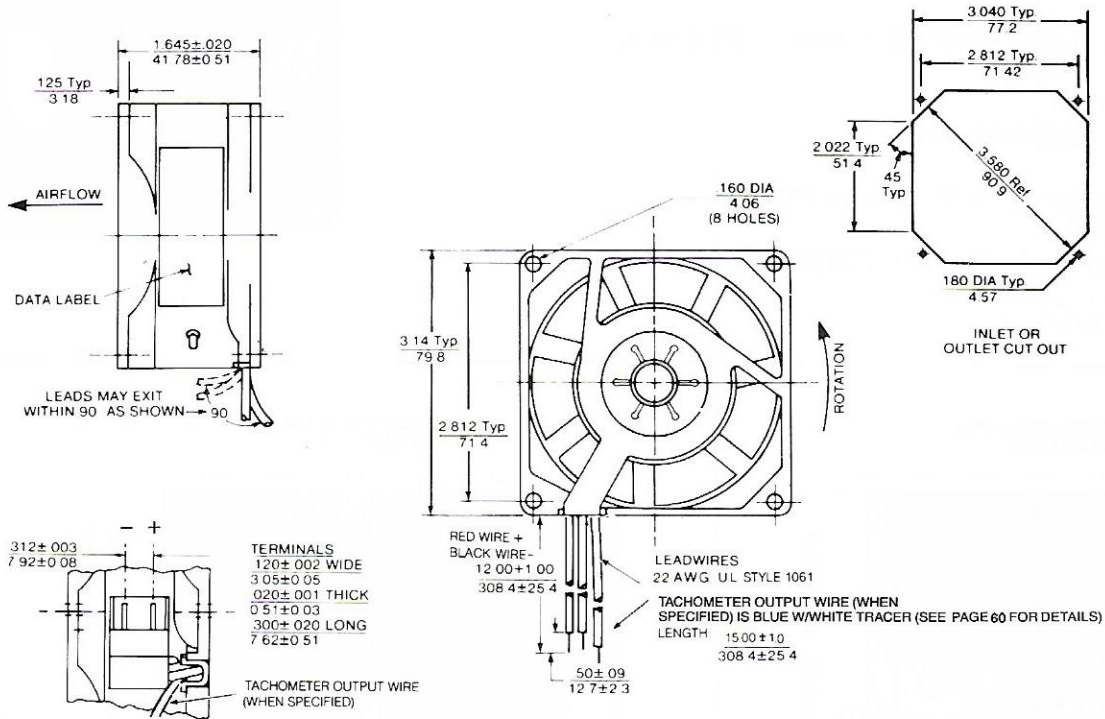


SPECIFICATIONS

LEADWIRES		TERMINAL		Bearing	Nominal VDC	Range VDC	Watts	Running	Locked	Inrush	RPM	CFM	L/Sec.
Model No.	Part No.	Model No.	Part No.					Current	Rotor	Current			
*SD12B1	028933	*SD12B2	032001	Ball	12	6-14	3.1	260	1000	1000	3500	35	16.5
†SD12B5	030767	†SD12B9	030753	Ball	12	6-14	3.1	260	1000	1000	3500	35	16.5
*SD24B1	028934	*SD24B2	032002	Ball	24	12-28	3.1	130	500	500	3500	35	16.5
†SD24B5	030768	†SD24B9	030754	Ball	24	12-28	3.1	130	500	500	3500	35	16.5
*SD48B1	028935	*SD48B2	032003	Ball	48	24-56	3.1	65	250	250	3500	35	16.5
†SD48B5	030769	†SD48B9	030755	Ball	48	24-56	3.1	65	250	250	3500	35	16.5
SD12H1	030745	SD12H2	030756	Ball	12	6-14	2.0	160	660	660	2600	26	12.3
†SD12H5	030746	†SD12H9	030757	Ball	12	6-14	2.0	160	660	660	2600	26	12.3
SD24H1	030747	SD24H2	030758	Ball	24	12-28	2.0	80	300	300	2600	26	12.3
†SD24H5	030748	†SD24H9	030759	Ball	24	12-28	2.0	80	300	300	2600	26	12.3
SD12F1	030749	SD12F2	030760	Ball	12	6-14	1.0	80	250	250	1700	17	8.3
†SD12F5	030750	†SD12F9	030761	Ball	12	6-14	1.0	80	250	250	1700	17	8.3
SD24F1	030751	SD24F2	030762	Ball	24	12-28	1.0	40	150	150	1700	17	8.3
†SD24F5	030752	†SD24F9	030763	Ball	24	12-28	1.0	40	150	150	1700	17	8.3

*Distributor Item

All figures are nominal delivery values at sea level
 † Tachometer Output Models



DIMENSIONS in ± mm
TOLERANCES xx= .03 / 0.8
xxx= 0.10 / 25
(UNLESS NOTED)

Specifications subject to change without notice

MOTOR

Brushless electronic commutation provided by dependable solid state circuitry.
Stainless steel ball bearings.
100% dielectric tested at 600 VAC/1 sec./500 microamps maximum leakage.
Electronic locked rotor protection. (P.T.C.) SD_B_versions
Impedance protected SD_H_and SD-F-versions
Automatic restart capability
Polarity protected.
Power transistors heat sunk to metal housing.
Stainless steel shaft.

CONSTRUCTION

Venturi - one piece die-cast zinc alloy, painted black.
Propeller - flame retardant polypropylene, black, meets UL94V-0 flammability rating

EMI

Per MIL STD 461, meets EMI standards per FCC Part 15, Subpart J of Docket 20780, Class A and B radiated and conducted emission, meets EMI standards per VDE Specification 0871/6.78 for category A and B requirements.

OPTIONS

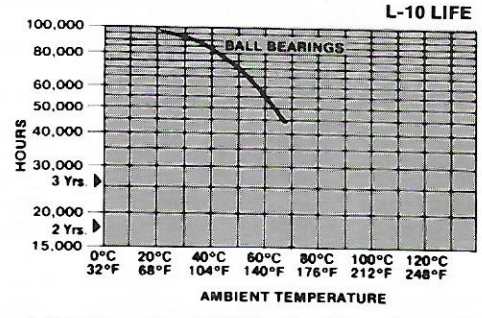
- Capable of furnishing:
- Reverse flow
- Sleeve or ball bearing models
- Choice of leadwires or terminal block
- Tachometer Output - square wave output equal to one pulse per revolution. Two pulses available as "special" only.
- Harness assemblies
- Fan Performance Sensor

ACOUSTIC RATINGS

Models	DC	AIR FLOW		STATIC PRESSURE		PER INCE ANSI S12.11-1987			FREELY SUSPENDED @ 1 METER
		CFM	L/Sec	"w.g.	mm H ₂ O	PSIL dB	SPL dBA @ 3'	NEPL Bels 'A'	dBA
SD12B SD24B SD48B	NOMINAL	35	16.5	0	0	43.4	48.3	5.83	47.6
SD12H SD24H	NOMINAL	26	12.3	0	0	32.6	39.2	4.92	39.5
		23	10.9	0.04	1.02	31.3	38.8	4.88	
SD12F SD24F	NOMINAL	17	8.0	0	0	23.2	30.3	4.03	29.8
		14	6.6	0.02	0.51	19.8	27.0	3.70	

LIFE EXPECTANCY

The curve represents the continuous duty life of Sprite DC fans at a given temperature, after which 90% of the units will still be operating.



Example: When run at 40°C ambient, 90% of ball bearing units will still be running after 83,000 hours continuous duty.