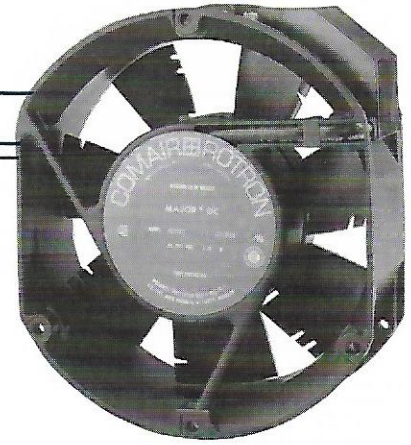


# MAJOR<sup>®</sup> DC (QUIET)

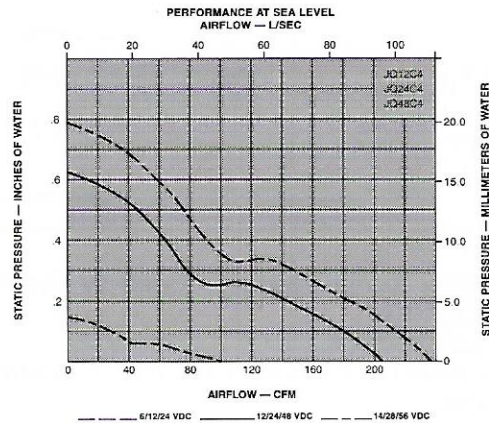
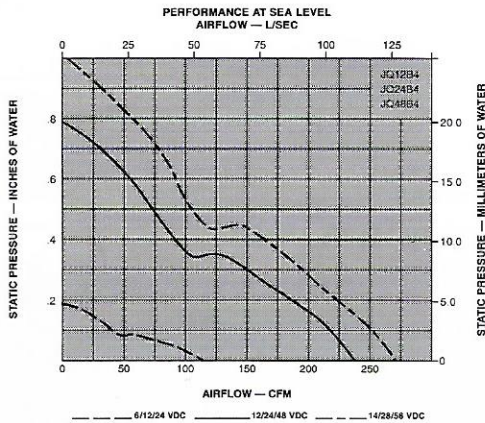
## BRUSHLESS DC FAN

### FEATURES

- Size - 6.75" x 5.92" x 2.00" deep (171.5 mm x 150.4 x 50.8 mm)
- 100 to 260 CFM (47.2 to 123 L/Sec.)
- 12, 24 and 48 VDC (Nominal)
- Feathered Edge™ for lower noise
- Operating temperature range: - 10°C to + 70°C
- Weight - 1.84 lbs. (.84 Kg)
- UL Yellow Card Recognized - File No. E31293
- CSA Certified - File No. LR52898
- TUV Certified - EN' 60950



### PERFORMANCE



### SPECIFICATIONS

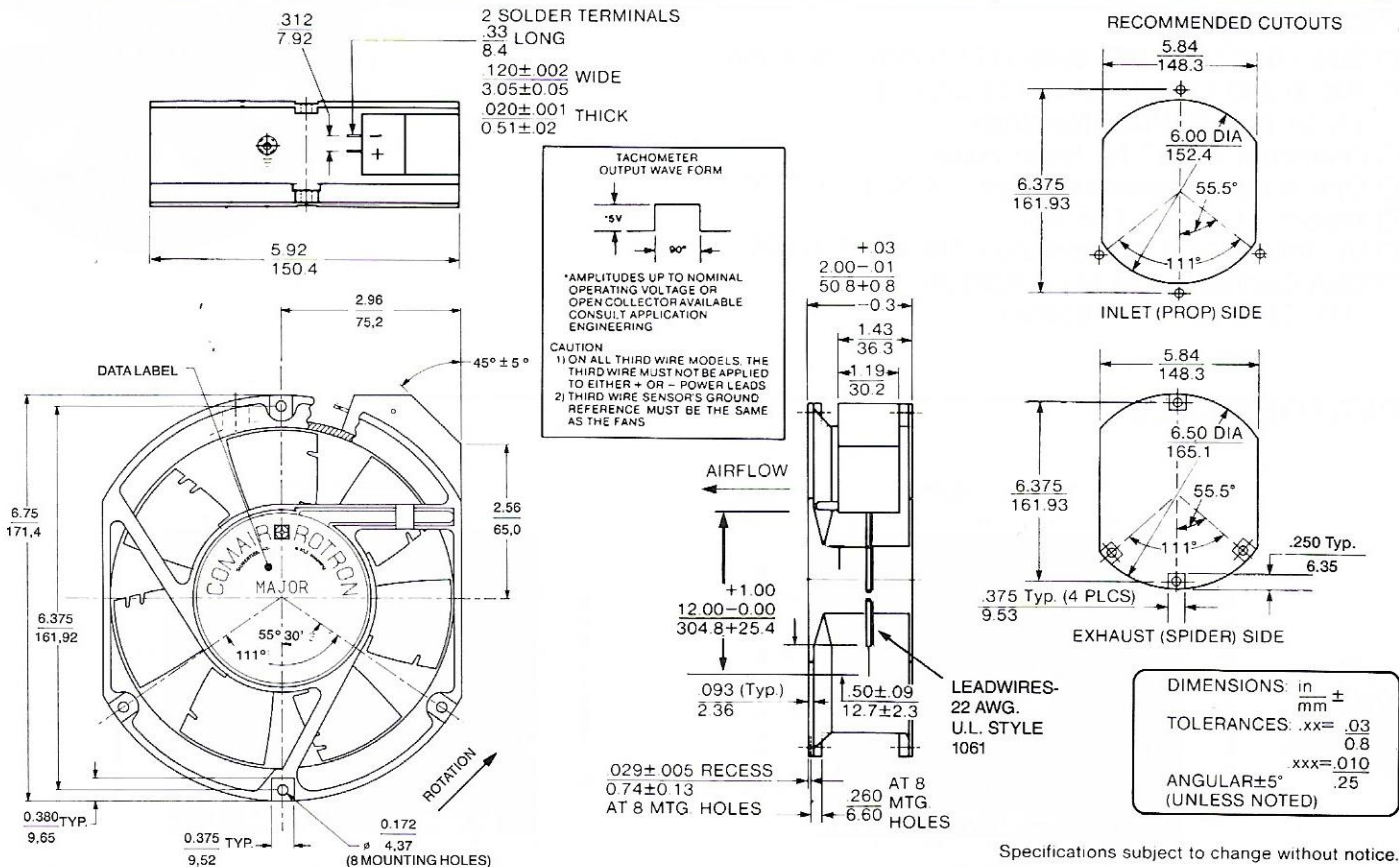
Model No.	Part No.	Bearing	Nominal VDC	Range VDC	Watts	Running Current mA	Locked Rotor mA	RPM	CFM	L/Sec.
JQ12B4	031089	Ball	12	9-14	26.3	2200	3500	3500	235	111
*JQ24B4	031090	Ball	24	12-28	20.3	850	1500	3500	235	111
*JQ48B4	031091	Ball	48	24-56	20.1	420	700	3500	235	111
*JQ12C4	031092	Ball	12	9-14	14.6	1215	2700	3000	200	95
*JQ24C4	031093	Ball	24	12-28	15.7	660	1500	3150	210	99
*JQ48C4	031094	Ball	48	24-56	13.7	290	700	3150	210	99

All figures are nominal free delivery values at sea level.

JQ24B7 031491 2

\* Distributor Item.





**MOTOR**

Brushless electronic commutation provided by dependable solid state circuitry.  
 Stainless steel ball bearings.  
 100% dielectric tested at 600 VAC/1 sec./500 microamps maximum leakage.  
 Electronic locked rotor protection. (Current limited)  
 Automatic restart capability.  
 Polarity protected.  
 Power transistor heat sunk to metal housing.

**CONSTRUCTION**

Venturi - single piece, die-cast aluminum, painted black.  
 Propeller and Terminal Cover - polycarbonate, black, meeting UL94V-0 flammability rating.

**EMI**

Per MIL STD 461 meets EMI standards per FCC Part 15, Subpart J of Docket 20780, Class A and B radiated and conducted emissions, meets EMI standards per VDE Specification 0871/6.78 for category A and B requirements.

**OPTIONS**

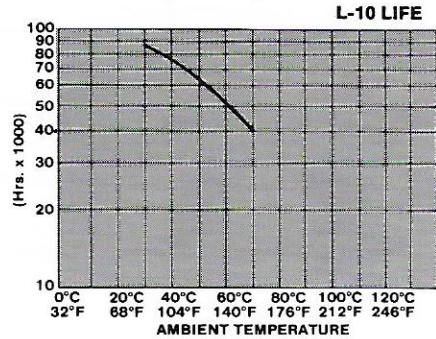
Capable of furnishing:  
 Terminal or leadwire versions.  
 Thermal speed control.  
 Isolated Tachometer output - square wave output equal to two pulses per revolution.  
 Various Fan Performance Sensor (FPS) options.  
 Harness assemblies.

**ACOUSTIC RATINGS**

Models	VOLTAGE	AIR FLOW		STATIC PRESSURE		PER INCH <sup>2</sup> ANSI S12.11-1987			FREELY SUSPENDED @ 1 METER
		CFM	L/Sec	"w.g.	mm H <sub>2</sub> O	PSIL	SPL	NEPL	
	DC					dB	dBA @ 3'	Bels 'A'	dBA
JQ12B4	NOMINAL	235	110.9	0	0	53.4	58.7	6.87	54.3
JQ24B4		156	73.6	0.245	6.22	49.8	54.9	6.49	
JQ48B4		210	99.1	0	0	45.9	52.1	6.21	49.0
JQ12C4	NOMINAL	118.2	55.8	0.185	4.70	44.2	49.4	5.94	
JQ24C4									
JQ48C4									

**LIFE EXPECTANCY**

The curve represents the continuous duty life of Major DC (Quiet) fans at a given temperature, after which 90% of the units will still be operating.



**EXAMPLE:** When run at 50°C ambient, 90% of the Major DC (Quiet) units will still be running after 62,000 hours continuous duty.